

HWY 64 ATV PARK-N-RIDE AREA

The [x] on the map is where the HWY 64 ATV park-n-ride area is located.



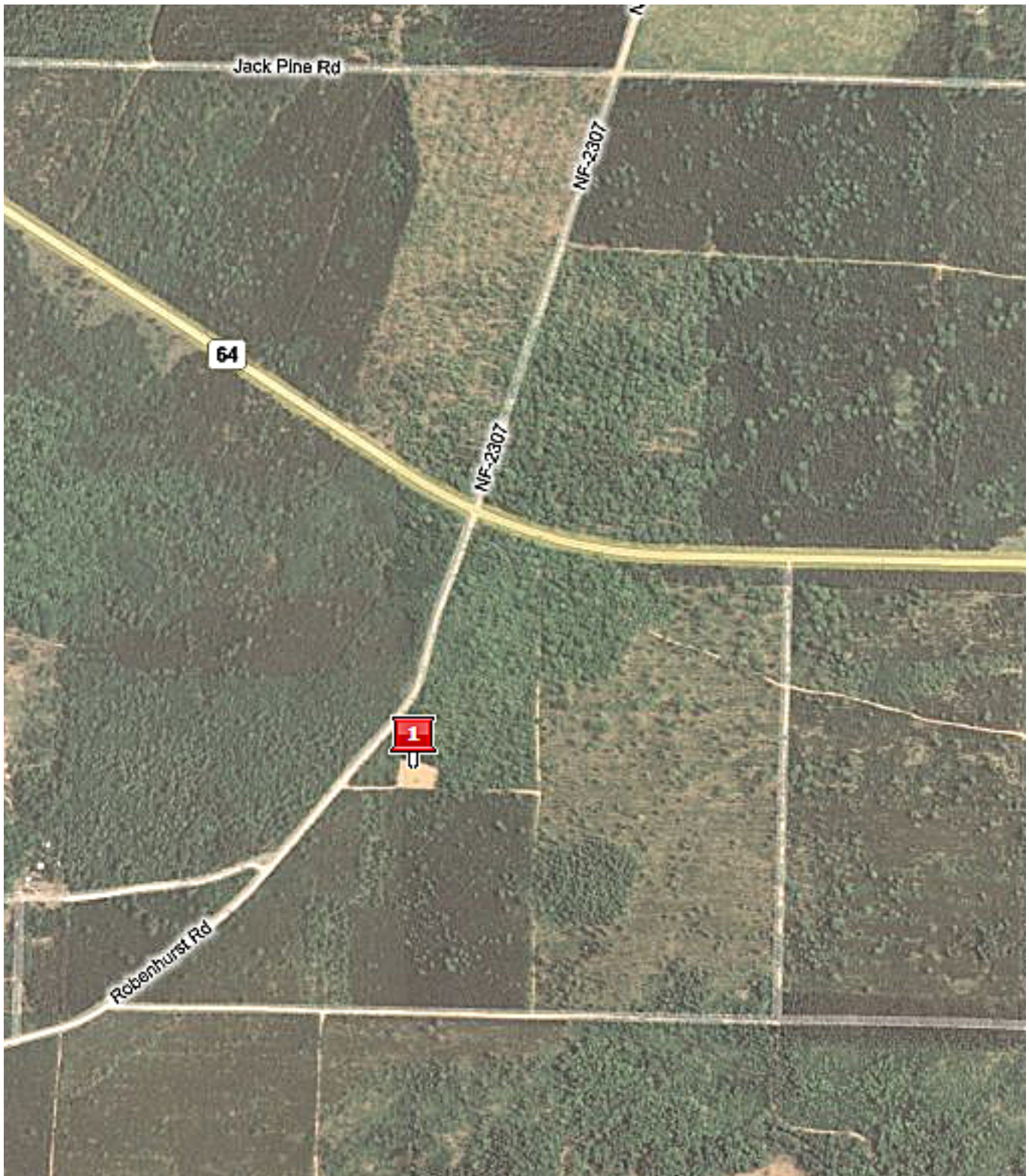
Depending on the direction from where you are coming from - you are seeking a park-n-ride area off of HWY 64 which is just a few miles from the 64 & 32 intersection on the south side of 64.

If you are traveling West on 64 from Pound Wisconsin - you will go past the muck farms first. Then look for an ATV parking area sign indicating a road to the left to turn.

If you are traveling East from 32 on to 64 - then after a few miles, again look for an ATV parking area sign indicating a road to the right to turn.



The ATV parking area is less than a $\frac{1}{4}$ mile from HWY 64. It will be on the left side of the road. It's a dirt road, sometimes hidden by the tree's. Drive slow, you can't miss it...



Once in the parking area - pick a spot and unload your ATV. The trail is directly East of where you parked.