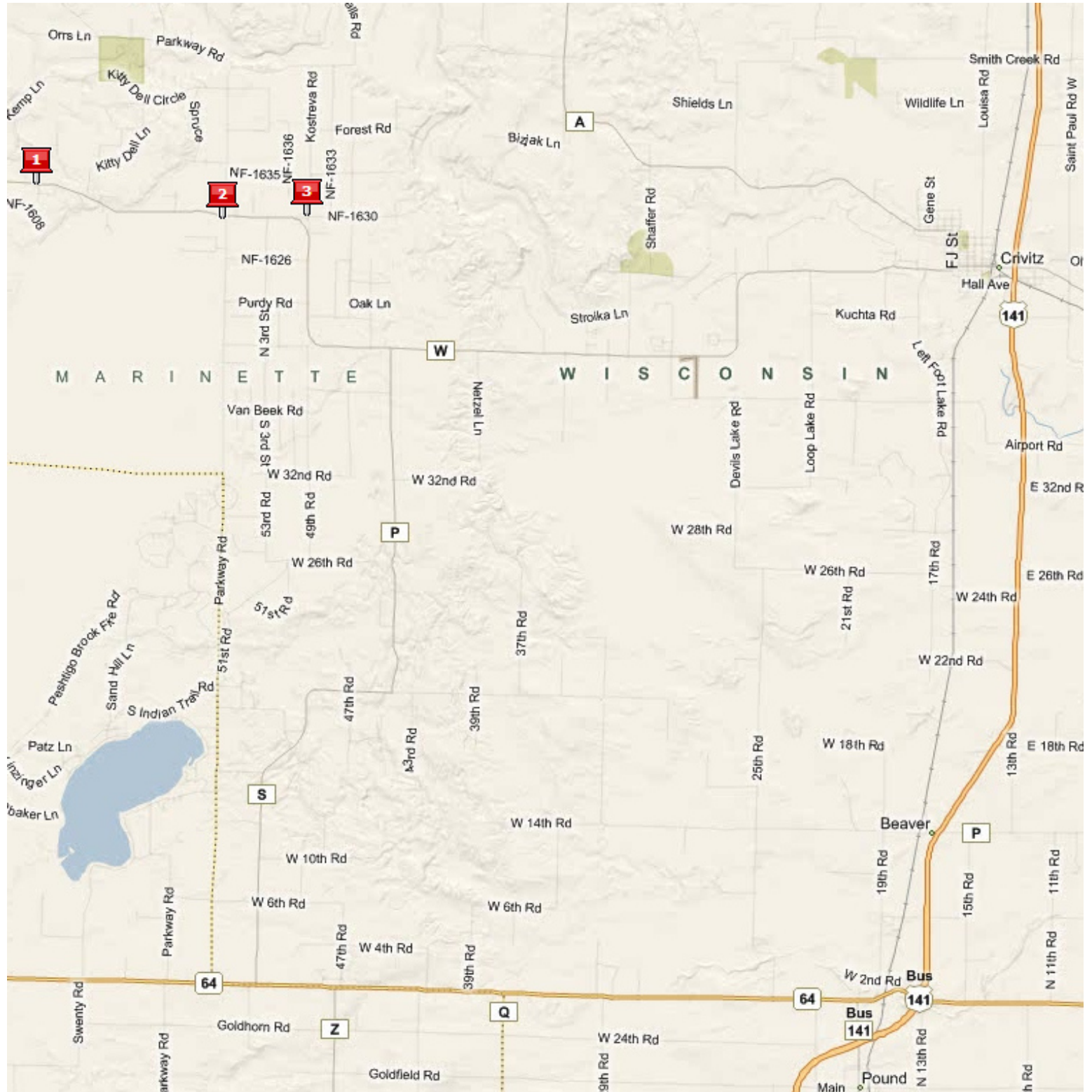


Parkway / County W Park-n-Ride Area

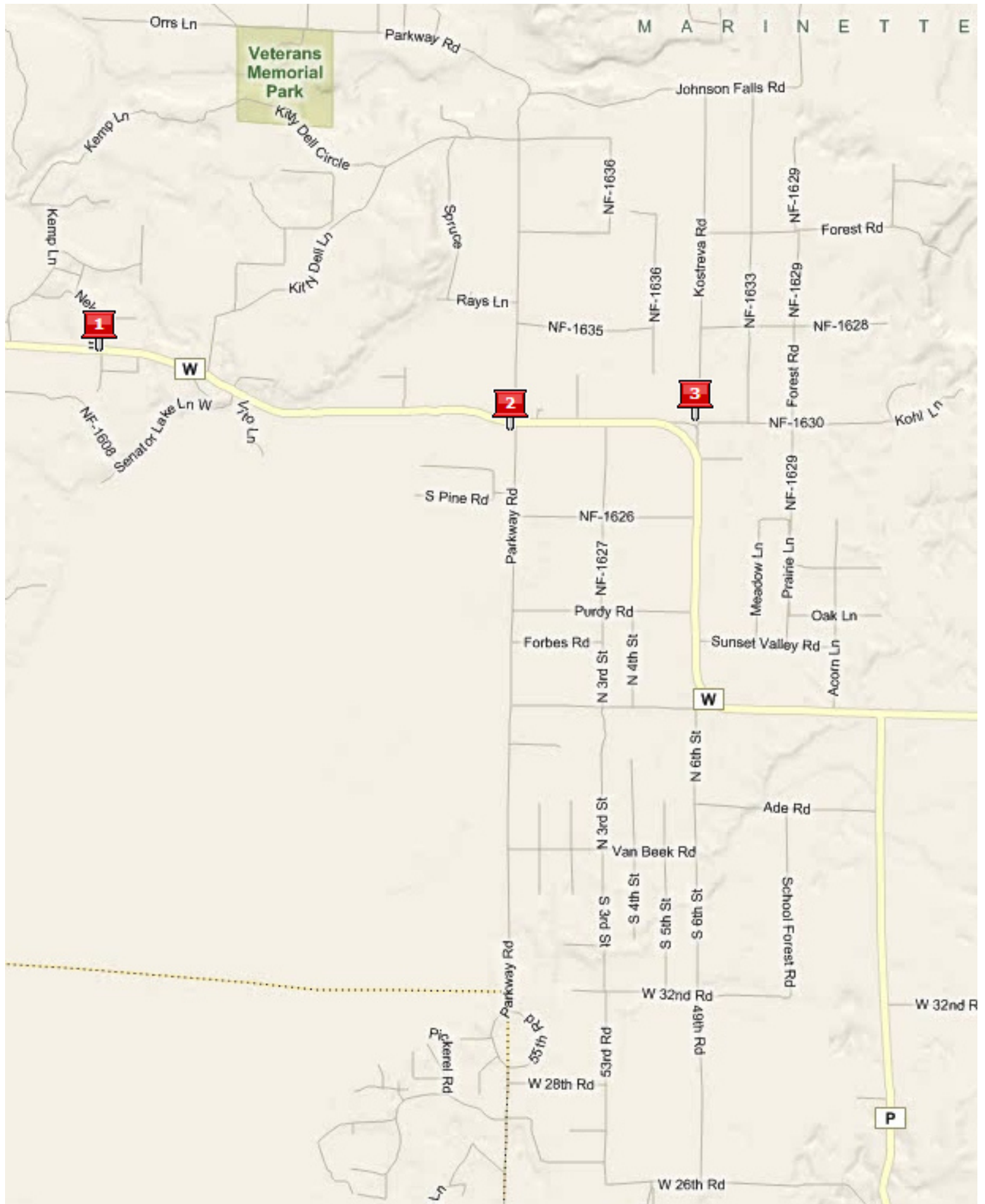
Depending on the direction from which you are traveling - there are three locations to unload your ATV.



#1 is located near Thunder Lake at the Wheel-In Bar & Grill.

#2 is located at the BP gas station across from the Cross-Roads Bar & Grill

#3 is located just off of County W.

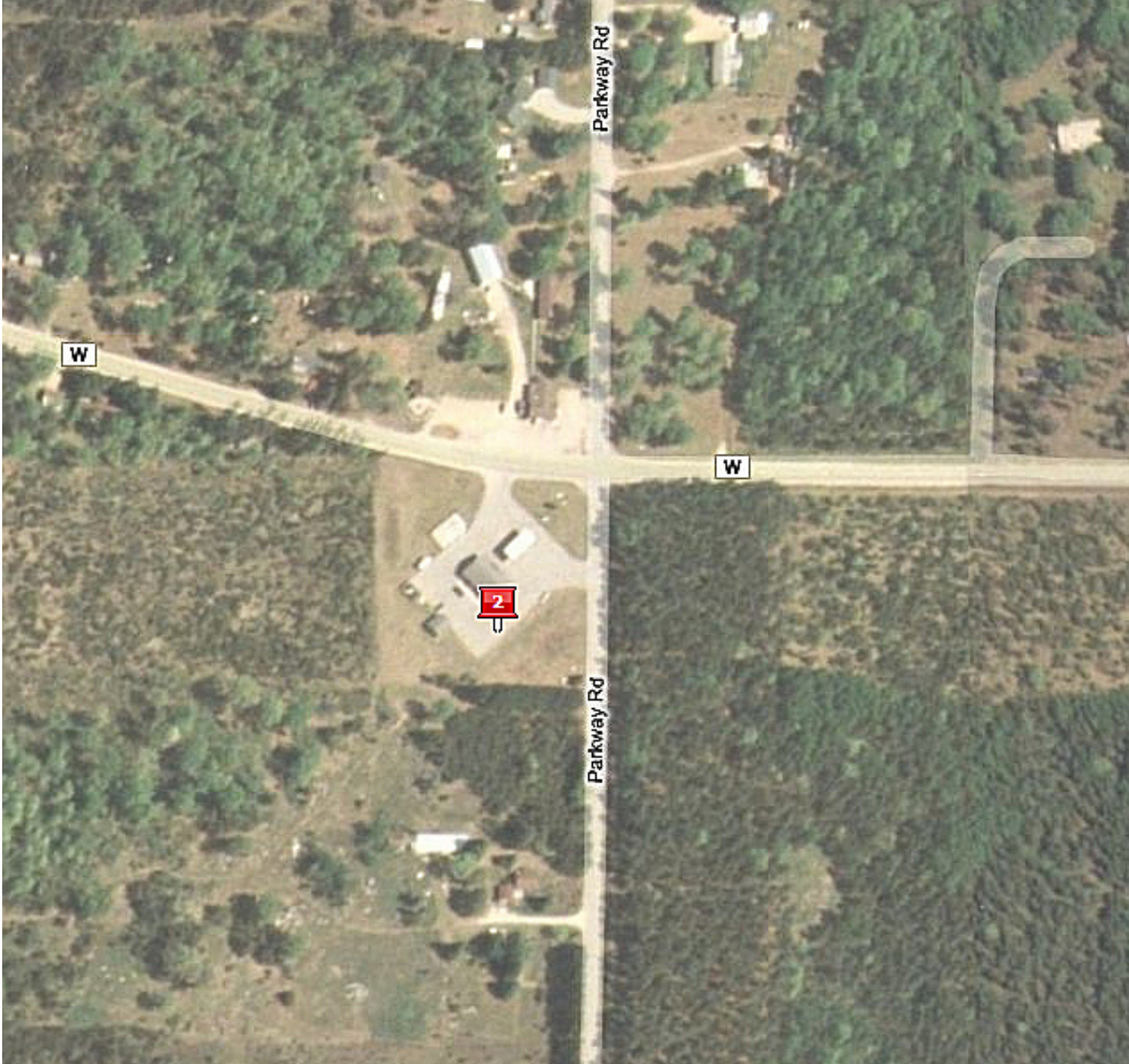


Pin #3 is just off of County W as you make the turn. There is an ATV parking sign posted on this corner. The area is just in the field on the left side of the road.



Pin #2 is located at the PB gas station on the intersection of County W and Parkway Road.

NOTE: Parking is in the grass along side of Parkway and the gas station. Or you can park behind the gas station just off the blacktop parking lot.



Pin #1 is located at the Wheel Inn Bar & Grill just before you reach Thunder Lake.

NOTE: You have to park and unload in the ditch near the tavern, do not leave your vehicle on the road. And do not unload in the gravel parking lot for the tavern as this is for customers. There is plenty of room off the road in the grass.

